

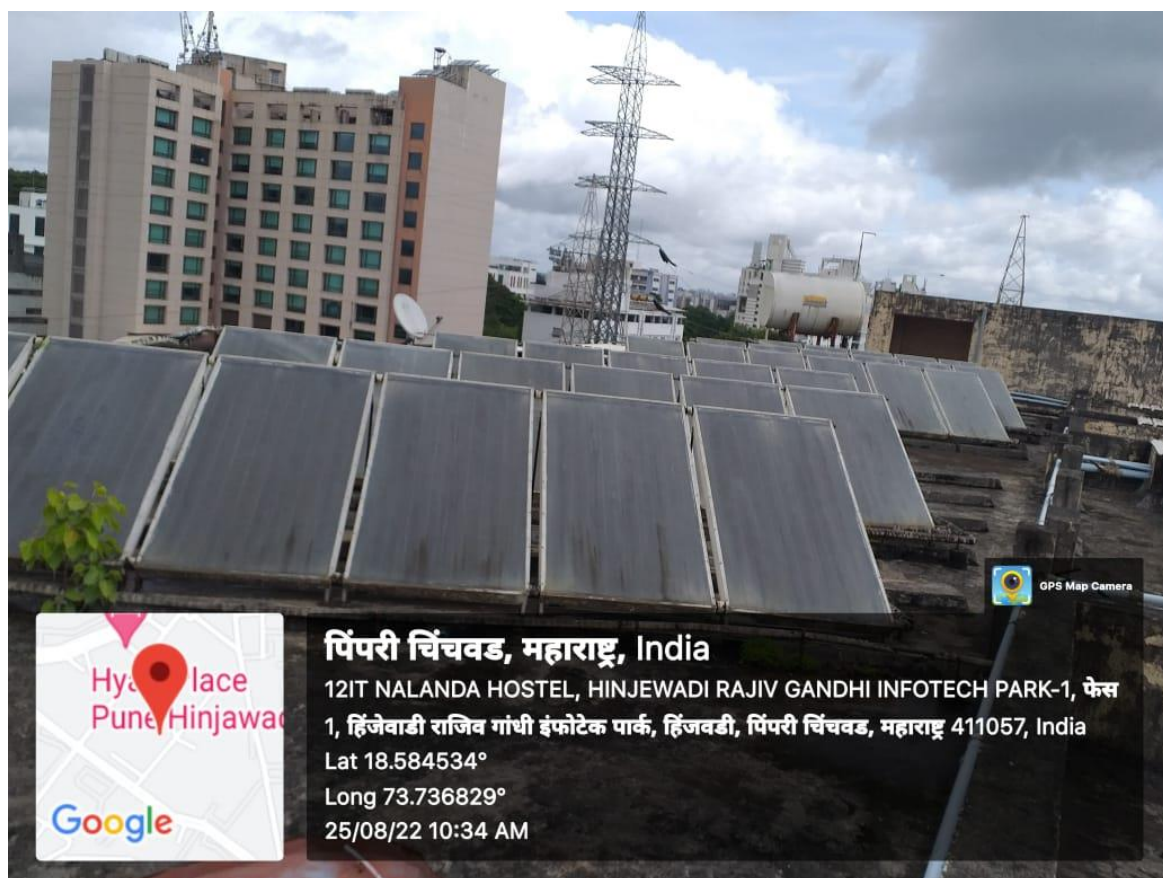
Criterion 7 – Institutional Values and Best Practices

7.1 Institutional values and social responsibilities

7.1.2 The Institute has facilities for alternate sources of energy and energy conservation measures



Solar panels for electricity generation



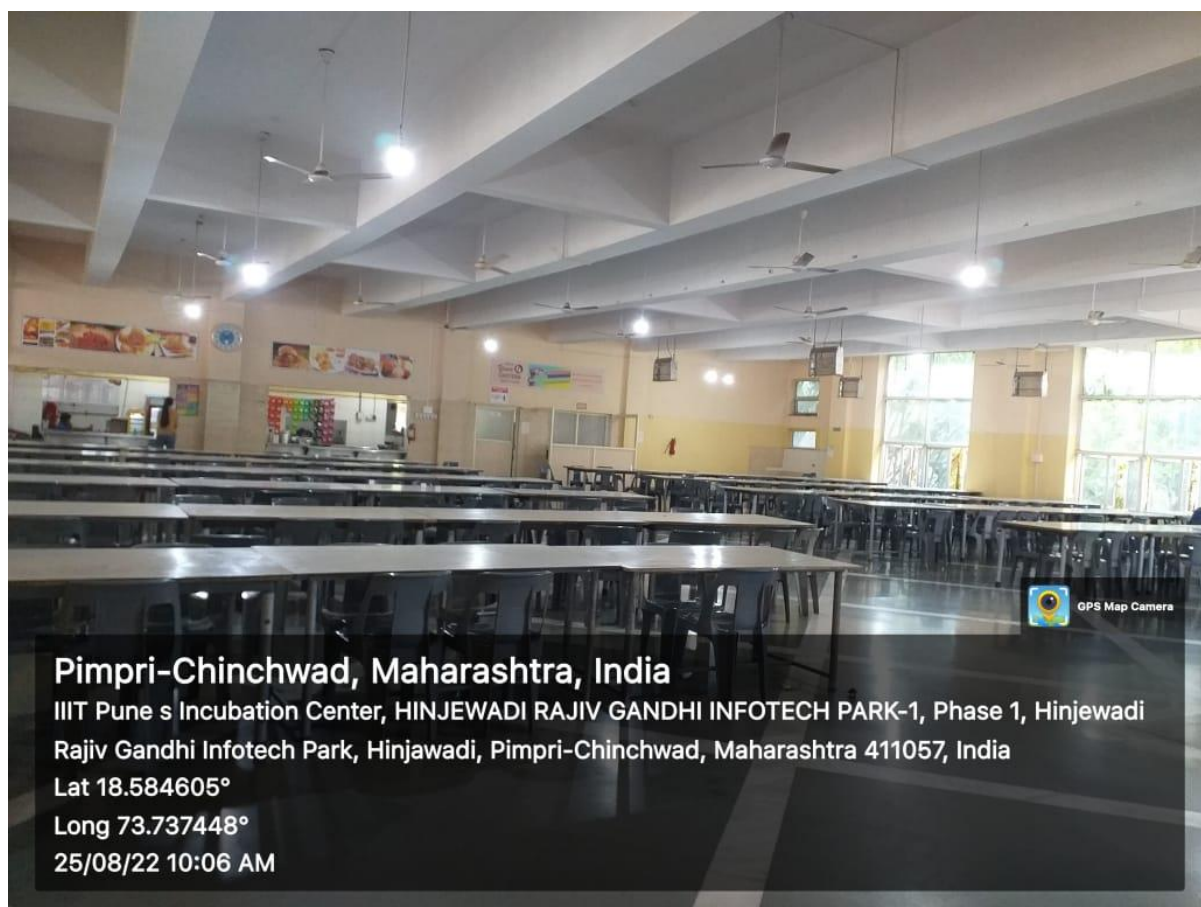
Solar water heaters for hosel rooms



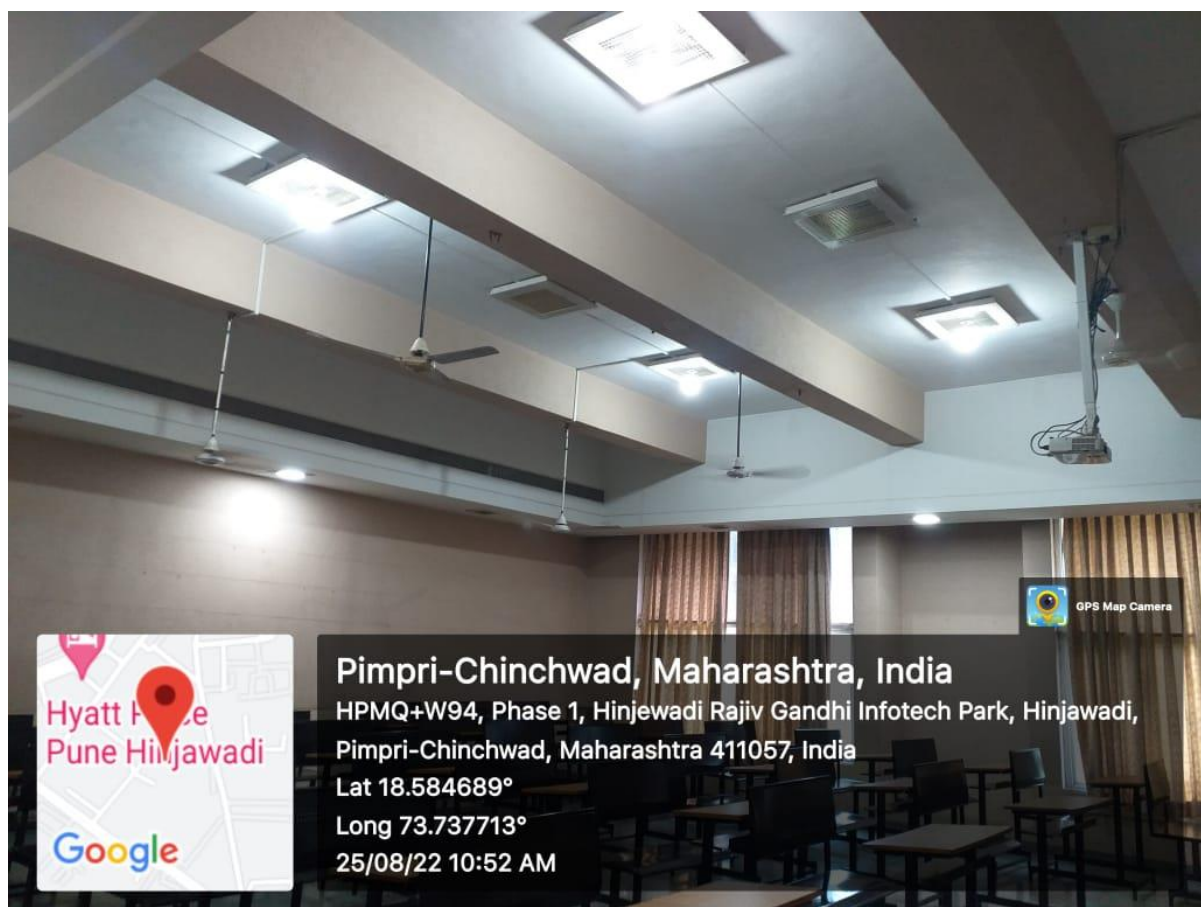
Grid connection of solar panel installation (Net metering)



Use of LED lamps at the Library



LED bulbs at the Cafeteria



LED lamps in the Classroom



LED lamps in E&T/C Laboratory



Sensor based lighting in washrooms to save electricity

Nat
Principal
International Institute of Information Technology
Hinjawadi, Pune - 411057

