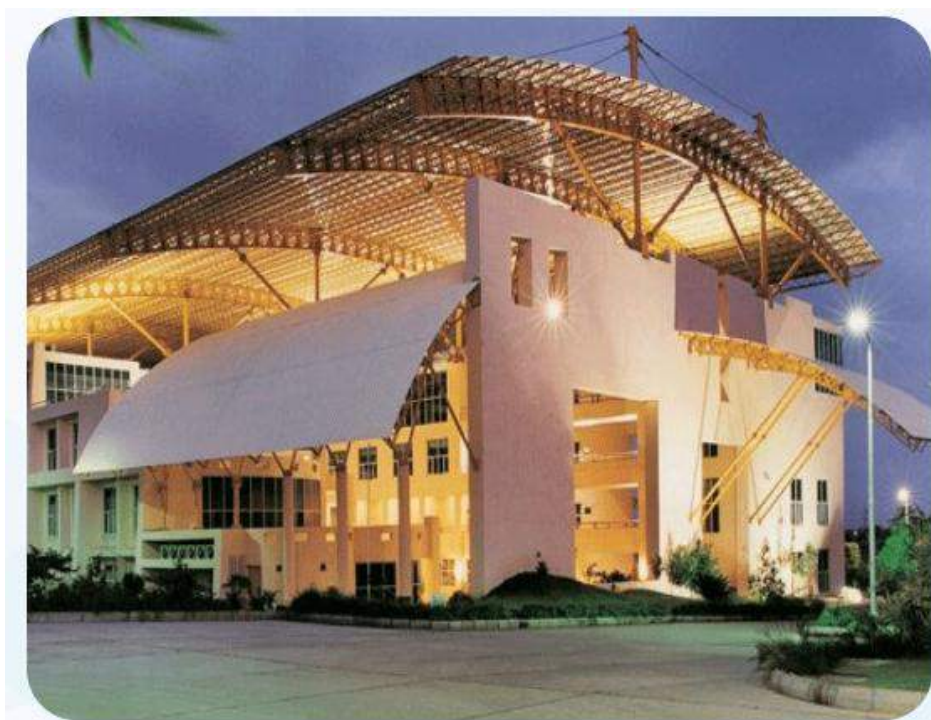


4.1 Physical Facilities

4.1.1 The Institution has adequate facilities for teaching- learning. viz., classrooms, laboratories, computing equipment etc.

Sr. No.	Title	Page No.
1.	Details of Physical Facilities	2
2.	Department wise Laboratory Details	4
3.	Hostel Facility Details	8
4.	Architect certificate	9
5.	Floor Plans	22



Details of Physical Facilities



- ✓ Green & Healthy Ambience
- ✓ Well Equipped Laboratories
- ✓ Tutorial Rooms
- ✓ Sports & Gymnasium Facilities
- ✓ Recreational Facilities
- ✓ Amply Stacked Library
- ✓ Wi-Fi Enabled Campus
- ✓ Entrepreneurship Cell
- ✓ Medical Emergency & Care Center
- ✓ Cafeteria

1. Instructional Area Details

Sr. No.	Learning Resources	Nos. required as per norms	Nos. available
01.	Classroom	10	10
02.	Tutorial Rooms	02	02
03.	Laboratories	28	28
04.	Drawing Hall	01	01
05.	Workshop	01	01
06.	Central Computing Facility	01	01
07.	Seminar Halls	02	02
08.	Central Library & Reading Room	01	01
09.	Additional Instructional Area	-	02

Area Type	Expected Room Area/Land Area as per AICTE norms	Actual Room Area/Land Area
Class Room	594	964
Tutorial Room	66	68
Laboratories-All	1848	1902
Drawing Hall	132	145
Workshops	200	201
Central Computing Facility	150	150
Seminar Hall	264	395
Central Library & Reading Room	400	407
Additional Instructional Area	-	121
Summary Total	3654	4353

2. Administrative Area Details

Particulars	No. required as per norms	No available	Area required as per norms	Area Available
Cabin for HoD and Department Office	3	3	60	66
Faculty Rooms	-	19	245	380
Board Room	1	1	20	34
Principal Office	1	1	30	33
Examination Control Room	1	1	30	30
Central Stores	1	1	30	30
Maintenance	1	1	10	15
Security	1	1	10	34
Housekeeping	1	1	10	13
Pantry for Staff	1	1	10	13

3. Amenities Area Details

Particulars	No. required as per norms	No available	Area required as per norms	Area Available
Boys Common Room	1	1	75	75
Girls Common Room	1	1	75	75
First Aid cum Sick Room	1	1	10	42
Stationary Store & Reprography	1	1	10	13
Cafeteria	1	1	150	977
Girls Hostel	1	1	Adequate	Adequate
Boys Hostel	1	1	Adequate	Adequate
Sports Club	1	1	100	101

4. Other Support Facilities

Particulars	No. required as per norms	No available	Area required as per norms	Area Available
Entrepreneurship Development Cell	1	1	10	18
Placement / Industry Institution Partnership Cell	1	1	30	32
Alumni Association Cell	1	1	10	26
IQAC Cell	1	1	10	14
IEEE Cell	1	1	30	60



Department wise Lab Details

Department Name	Laboratory Name	Room No.	Area (Sq. M.)	Lab Cost (INR in lakh)
Department of Electronics & Telecommunication	Basic Electrical & Electronics Laboratory	C-12	66.82	478728.8
	Electronic Devices and Circuit Laboratory	A-105	68.50	619986.10
	Network and Measurement Laboratory	A-04	76.75	1414840.71
	Electronics Design Laboratory	A-102	66.38	748395.00
	Digital and VLSI Laboratory	A-104	66.11	1317660.44
	Digital and Microprocessor Laboratory and E&TC Computer Center	A-107	70.50	397000.00
	Communication Laboratory	A-115	69.12	1091369.00
	Signal Processing Laboratory	A-112	66.70	921007.00
	Microcontroller & Embedded Laboratory	A-202	67.61	1336228.81
Department of Computer Engineering	Software Lab	A-203	67.65	630000.00
	Programming lab-III	A-204	67.38	824060.00
	Programming lab-II	A-205	66.46	887054.40
	Programming lab-I	A-206	67.37	630000.00
	Fundamental Programming Lab-I/II	A-210	66.27	707980.00
	CE-Computer Center	A-211	66.50	608875.00
	Project & R&D LAB	A-11A	66.40	422046.20
	Basic Mechanical Engineering	C-15	69.02	82,452.00
Department of Information Technology	Network Laboratory	A-214	66.30	6,39,780.00
	Data Structure Laboratory	A-213	66.70	7,94,000.00
	Data Base Laboratory	A-224	68.35	3,09,492.00
	Artificial Intelligence Laboratory	A-225	67.45	7,32,852.00
	Operating System Laboratory	A-316	66.62	7,32,852.00
	Digital Electronics & Microprocessor Laboratory	A-317	74.83	2,25,243.20
	IT Computer Center	A-6A	67.53	3,84,568.00
	Software Lab-I & Language Laboratory	A-6B	68.71	8,14,600.00
	Basic Civil and Environmental Engineering	C-16	69.02	1,96,195.00
Department of Applied Sciences	Engineering Chemistry	C-14	69.02	1,50,166.13
	Engineering Physics	C-17	66.83	2,67,787.14
	Engineering Graphics	A-5	144.81	40243.00
	Workshop	--	200.51	4,75,412.72



Hope Foundation's
**International Institute of
Information Technology (I²IT)**

Photographs of Physical Facilities
Well Equipped Laboratories



Library



Sports & Gymnasium Facilities



Convention Center



Seminar Hall



Class Rooms



Central Computing Facility



Hostel Facility Details

Hostel Intake Details

Academic Year	Name of Hostel	Total Number of Students
2018-2019	Mithila GirlsøHostel	158
	Nalanda BoysøHostel	254
2017-2018	Mithila GirlsøHostel	147
	Nalanda BoysøHostel	263
2016-2017	Mithila GirlsøHostel	159
	Nalanda BoysøHostel	256
2015-2016	Mithila GirlsøHostel	171
	Nalanda BoysøHostel	300
2014-2015	Mithila GirlsøHostel	166
	Nalanda BoysøHostel	271



Mumbai (Registered Office):
1st Floor, Filka Bldg., Daftary Road, Opp. Malad Railway Station, Malad (E),
Mumbai - 400 097

Pune Office:
A-101, Samruddhi Apartment, Amit Court campus, Near Mangala Theatre,
Shivajinagar, Pune - 411 005

Nashik · Aurangabad · Bangalore · Dubai



**7 DIMENSION DESIGN
SERVICES LLP**

www.7dimensiondesign.com

CERTIFICATE

The copies of approved site plan and building plans in respect of application submitted by International Institute of Information Technology (I²IT), P-14, Rajiv Gandhi Infotech Park, MIDC – Phase I, Hinjawadi, Pune – 411 057 were provided to me for verification regarding their authenticity and appropriateness.

Details of Site Plan & Building Plans:

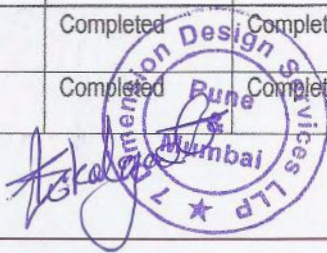
Plans approved by	Executive Engineer, MIDC, IT Division, Chinchwad, Pune & Executive Engineer, MIDC, IT Division, Shivajinagar, Pune
Approval Number	Letter Reference : NO/EE/I.T/Plans/1277/2002 / Letter Reference No.NO/EE/I.T/Plans/1076/of 2004 / Letters Reference Nos.NO/EE/I.T/Plans/2072/of 2009 & No./EE/I.T/Plans/2005/ of 2012
Date of Approval	17.06.2002 / 09.06.2004 / 09.11.2009 & 25.05.2012

I hereby certify that:

1. The Competent Authority has approved the site Plan and Building Plans of the Educational Institution at the address mentioned above i.e. P-14 ,Rajiv Gandhi Infotech Park, MIDC - Phase I, Hinjawadi, Pune - 411 057
2. I have verified the above mentioned site plan and Building Plans from the Office of the Competent Authority i.e. MIDC, Pune
3. The above mentioned site Plan and Building Plans have been approved by the Competent Authority
4. The above mentioned site plans and building plans are authentic
5. Construction of building admeasuring with the following details has been completed in all respects as per the approved Building Plan.

BUILDING - I - Academic Building - GROUND + 3 FLOORS

Sl. No.	Room No.	Room Type (mention Classroom / Laboratory / Toilet, etc.)	Carpet Area (in m ²)	Completion of Flooring	Completion of Walls and painting	Completion of Electrification and lighting
1	A-001	Maintenance	14.92	Completed	Completed	Completed
2	A-002	Faculty Room	22.32	Completed	Completed	Completed
3	A-003	Admin Office (Office all Inclusive)	68.48	Completed	Completed	Completed
4	A-004 (A)	Network and Measurement Laboratory	76.75	Completed	Completed	Completed
5	A-004 (B)	Faculty Room	7.84	Completed	Completed	Completed
6	A-005	Drawing Hall (Engineering Graphics)	144.81	Completed	Completed	Completed
7	A-006 (A)	IT - Computer Center	67.53	Completed	Completed	Completed
8	A-006 (B)	Language Laboratory	68.71	Completed	Completed	Completed



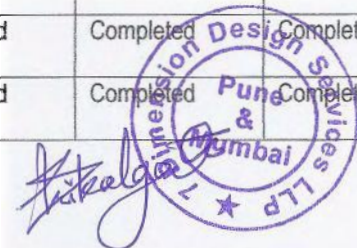
The “One-Stop Solution Centre” for projects which define technology based design and engineering



7 DIMENSION DESIGN
SERVICES LLP

www.7dimensiondesign.com

Sl. No.	Room No.	Room Type (mention Classroom / Laboratory / Toilet, etc.)	Carpet Area (in m ²)	Completion of Flooring	Completion of Walls and painting	Completion of Electrification and lighting
9	A-007 (A)	Maintenance	70.80	Completed	Completed	Completed
10	A-007 (B)	Office all Inclusive	5.13	Completed	Completed	Completed
11	A-008	Pantry for Staff	12.89	Completed	Completed	Completed
12	A-009	Maintenance	25.70	Completed	Completed	Completed
13	A-010	Classroom	98.20	Completed	Completed	Completed
14	A-011 (A)	Project and R & D Laboratory	66.40	Completed	Completed	Completed
15	A-011 (B)	Server Room (Other Office))	32.30	Completed	Completed	Completed
16	A-012	Toilets (Ladies Staff / Ladies Students /Gents Staff / Gents Student - All Separate)	60.44	Completed	Completed	Completed
17	A-013	Office all Inclusive	20.95	Completed	Completed	Completed
18	A-014	Board Room	33.70	Completed	Completed	Completed
19	A-015	Principal's / Director's Office	33.39	Completed	Completed	Completed
20	A-016	Toilet	6.84	Completed	Completed	Completed
21	A-017	Other Office	22.97	Completed	Completed	Completed
22	A-018	Office all Inclusive	8.38	Completed	Completed	Completed
23	A-019	Maintenance	6.71	Completed	Completed	Completed
24	A-020	Housekeeping Room	4.00	Completed	Completed	Completed
25	A - 101	Faculty Room	15.62	Completed	Completed	Completed
26	A - 102	Electronics Design Laboratory	66.38	Completed	Completed	Completed
27	A - 103	Faculty Room	15.82	Completed	Completed	Completed
28	A - 104	Digital and VLSI Laboratory	66.11	Completed	Completed	Completed
29	A - 105	Electronic Devices and Circuits Laboratory	68.50	Completed	Completed	Completed
30	A - 106	Faculty Room	19.94	Completed	Completed	Completed
31	A - 107	E & TC Computer Center	70.50	Completed	Completed	Completed

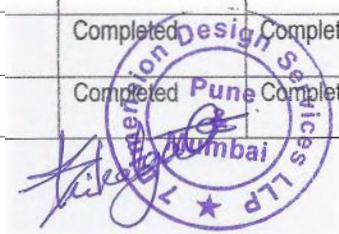




7 DIMENSION DESIGN SERVICES LLP

www.7dimensiondesign.com

Sl. No.	Room No.	Room Type (mention Classroom / Laboratory / Toilet, etc.)	Carpet Area (in m ²)	Completion of Flooring	Completion of Walls and painting	Completion of Electrification and lighting
32	A-108	Maintenance	15.86	Completed	Completed	Completed
33	A-109 (A)	Toilets (Ladies Staff / Ladies Students / Gents Staff / Gents Student - All Separate)	118.27	Completed	Completed	Completed
34	A-109 (B)	Toilets (Ladies Staff / Ladies Students / Gents Staff / Gents Student - All Separate)	117.37	Completed	Completed	Completed
35	A - 110	Maintenance	25.60	Completed	Completed	Completed
36	A - 111	Seminar Hall	250.01	Completed	Completed	Completed
37	A - 112	Signal Processing Laboratory	66.70	Completed	Completed	Completed
38	A - 113	Faculty Room	23.91	Completed	Completed	Completed
39	A - 114	Placement Office	31.70	Completed	Completed	Completed
40	A - 115	Communication Laboratory	69.12	Completed	Completed	Completed
41	A - 116	Exam Control Room	30.36	Completed	Completed	Completed
42	A - 117	Faculty Room	31.27	Completed	Completed	Completed
43	A - 118	Cabin for HoD	13.37	Completed	Completed	Completed
44	A-119	Other Office / Department Office	13.48	Completed	Completed	Completed
45	A - 120	Central Store	30.16	Completed	Completed	Completed
46	A - 121	Classroom	96.97	Completed	Completed	Completed
47	A - 122	Classroom	97.17	Completed	Completed	Completed
48	A - 123	Other Office	153.10	Completed	Completed	Completed
49	A-201	Other Office	18.39	Completed	Completed	Completed
50	A - 202	Microcontroller & Embedded Laboratory	67.61	Completed	Completed	Completed
51	A - 203	Software Laboratory	67.65	Completed	Completed	Completed
52	A - 204	Programming Laboratory - III	67.38	Completed	Completed	Completed
53	A - 205	Programming Laboratory - II	66.46	Completed	Completed	Completed

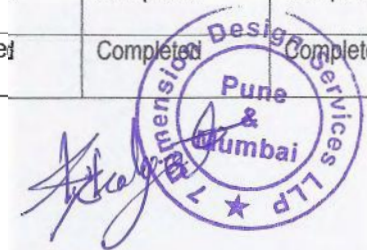




7 DIMENSION DESIGN
SERVICES LLP

www.7dimensiondesign.com

Sl. No.	Room No.	Room Type (mention Classroom / Laboratory / Toilet, etc.)	Carpet Area (in m ²)	Completion of Flooring	Completion of Walls and painting	Completion of Electrification and lighting
54	A - 206	Programming Laboratory - I	67.37	Completed	Completed	Completed
55	A-207(A)	Toilets (Ladies Staff / Ladies Students /Gents Staff / Gents Student - All Separate)	130.90	Completed	Completed	Completed
56	A-207(B)	Toilets (Ladies Staff / Ladies Students /Gents Staff / Gents Student - All Separate)	42.25	Completed	Completed	Completed
57	A - 208	Faculty Room	28.78	Completed	Completed	Completed
58	A-209	Central Computing Facility	150.13	Completed	Completed	Completed
59	A-210	Fundamental of Programming Laboratory I & II	66.27	Completed	Completed	Completed
60	A-211	CE - Computer Center	66.50	Completed	Completed	Completed
61	A-212 (A)	Cabin for HoD	18.76	Completed	Completed	Completed
62	A-212 (B)	Department Office	18.68	Completed	Completed	Completed
63	A-212 (C)	Department Office	19.97	Completed	Completed	Completed
64	A-212 (D)	Cabin for HoD	11.90	Completed	Completed	Completed
65	A-212 (E)	Department Office / Faculty Room	16.74	Completed	Completed	Completed
66	A-213	Data Structure Laboratory	66.70	Completed	Completed	Completed
67	A-214	Network Laboratory	66.30	Completed	Completed	Completed
68	A-215	Faculty Room	5.00	Completed	Completed	Completed
69	A-216	Tutorial Room	34.20	Completed	Completed	Completed
70	A-217	Classroom	59.85	Completed	Completed	Completed
71	A-218	Faculty Room	30.00	Completed	Completed	Completed
72	A-219	Faculty Room	13.89	Completed	Completed	Completed
73	A-220	House Keeping	13.35	Completed	Completed	Completed
74	A-221	Faculty Room	26.97	Completed	Completed	Completed
75	A-222	Classroom	100.58	Completed	Completed	Completed

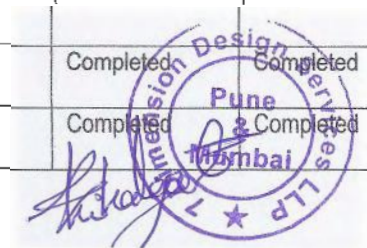




7 DIMENSION DESIGN SERVICES LLP

www.7dimensiondesign.com

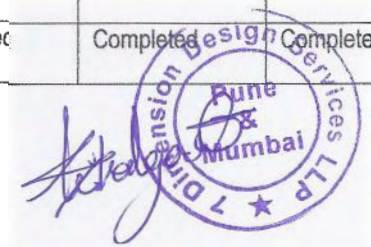
Sl. No.	Room No.	Room Type (mention Classroom / Laboratory / Toilet, etc.)	Carpet Area (in m ²)	Completion of Flooring	Completion of Walls and painting	Completion of Electrification and lighting
76	A-223	Classroom	100.58	Completed	Completed	Completed
77	A-224	Database Laboratory	68.35	Completed	Completed	Completed
78	A-225	Artificial Intelligence Laboratory	67.45	Completed	Completed	Completed
79	A-301	Boys Common Room	75.05	Completed	Completed	Completed
80	A-302	Girls Common Room	75.15	Completed	Completed	Completed
81	A-303 (A)	Toilets (Ladies Staff / Ladies Students /Gents Staff / Gents Student - All Separate)	130.90	Completed	Completed	Completed
82	A-303 (B)	Toilets (Ladies Staff / Ladies Students /Gents Staff / Gents Student - All Separate)	42.85	Completed	Completed	Completed
83	A-304	Other Office	25.60	Completed	Completed	Completed
84	A-305	Classroom	118.86	Completed	Completed	Completed
85	A-306	Display Area	150.97	Completed	Completed	Completed
86	A-307	Seminar Hall	144.82	Completed	Completed	Completed
87	A-308	Tutorial Room	34.00	Completed	Completed	Completed
88	A-309	Classroom	60.55	Completed	Completed	Completed
89	A-310	Faculty Room	35.92	Completed	Completed	Completed
90	A-311	Faculty Room	13.76	Completed	Completed	Completed
91	A-312	Stationery Store & Reprographic Centre	13.25	Completed	Completed	Completed
92	A-313	Maintenance	27.32	Completed	Completed	Completed
93	A-314	Classroom	100.58	Completed	Completed	Completed
94	A-315	Classroom	100.58	Completed	Completed	Completed
95	A-316	Operating Systems Laboratory	66.62	Completed	Completed	Completed
96	A-317	Digital Electronics & Microprocessor Laboratory	74.83	Completed	Completed	Completed
97	W-1	Workshop	200.51	Completed	Completed	Completed
98	S-001	Security	33.63	Completed	Completed	Completed





BUILDING - II – Academic, Library and Canteen Building - GROUND + 1 FLOOR

Sl. No.	Room No.	Room Type (mention Classroom / Laboratory / Toilet, etc.)	Carpet Area (in m ²)	Completion of Flooring	Completion of Walls and painting	Completion of Electrification and lighting
1	C - 01	Reception Area	144.37	Completed	Completed	Completed
2	C - 02 (A) & (B)	Cafeteria	675.21	Completed	Completed	Completed
3	C - 03	Cafeteria	301.41	Completed	Completed	Completed
4	C - 04 / 05 / 06	Toilets	182.70	Completed	Completed	Completed
5	C - 11	Library and Reading Room	407.00	Completed	Completed	Completed
6	C - 12	Basic Electrical & Electronics Laboratory	66.82	Completed	Completed	Completed
7	C - 12 (A)	Faculty Area	14.00	Completed	Completed	Completed
8	C - 13	Toilets	45.22	Completed	Completed	Completed
9	C - 14	Engineering Chemistry Laboratory	69.02	Completed	Completed	Completed
10	C - 15	Basic Mechanical Engineering Laboratory	69.02	Completed	Completed	Completed
11	C - 16	Basic Civil Engg. and Engg. Mechanics Laboratory	69.02	Completed	Completed	Completed
12	C - 17	Engineering Physics Laboratory	66.83	Completed	Completed	Completed
13	C - 17 (A)	Faculty Area	27.00	Completed	Completed	Completed
14	C - 18	Classroom	66.50	Completed	Completed	Completed
15	C - 19	Classroom	66.50	Completed	Completed	Completed





7 DIMENSION DESIGN
SERVICES LLP

www.7dimensiondesign.com

BUILDING - III – Hostel 'A' – TAKSHASHILA - GROUND + 4 FLOORS (Additional Residences)

Sl. No./Floor No.	Room No.	Room Type (mention Classroom / Laboratory / Toilet, etc.)	Carpet Area (in m ²)	Completion of Flooring	Completion of Walls and painting	Completion of Electrification and lighting
1 (Ground)	T001 - T005	Three Rooms	105.75	Completed	Completed	Completed
		Two Halls	176.25			
2 (First)	T101 - T104	One Room	35.25	Completed	Completed	Completed
		Three Halls	246.75			
3 (Second)	T201 - T205	Two Rooms	70.50	Completed	Completed	Completed
		Three Halls	211.50			
4 (Third)	T301 - T305	Three Rooms	105.75	Completed	Completed	Completed
		Two Halls	176.25			
5 (Fourth)	T402 - T404	Two Rooms	70.50	Completed	Completed	Completed
		-	0.00			

BUILDING - IV – Hostel 'B' – NALANDA - GROUND + 7 FLOORS (Boys Hostel)

Sl. No./Floor No.	Room No.	Room Type (mention Classroom / Laboratory / Toilet, etc.)	Carpet Area (in m ²)	Completion of Flooring	Completion of Walls and painting	Completion of Electrification and lighting
1 (Ground)	N001 - N015	Fifteen Rooms	375.08	Completed	Completed	Completed
		One Room	6.91			
		One Room	40.20			
2 (First)	N101 - N115	Fifteen Rooms	375.08	Completed	Completed	Completed
		One Room	6.91			
		One Room	24.67			
3 (Second)	N201 - N215	Fifteen Rooms	375.08	Completed	Completed	Completed
		One Room	6.91			
		One Room	24.67			
4 (Third)	N301 - N316	Sixteen Rooms	375.08	Completed	Completed	Completed
		One Room	6.91			
		One Room	18.67			
		One Room	6.00			





7 DIMENSION DESIGN
SERVICES LLP

www.7dimensiondesign.com

Sl. No./Floor No.	Room No.	Room Type (mention Classroom / Laboratory / Toilet, etc.)	Carpet Area (in m ²)	Completion of Flooring	Completion of Walls and painting	Completion of Electrification and lighting
5 (Fourth)	N401 - N416	Sixteen Rooms	375.08	Completed	Completed	Completed
		One Room	6.91			
		One Room	24.67			
6 (Fifth)	N501 - N516	Sixteen Rooms	375.08	Completed	Completed	Completed
		One Room	6.91			
		One Room	24.67			
7 (Sixth)	N601 - N615	Fifteen Rooms	375.08	Completed	Completed	Completed
		One Room	6.91			
		One Room	24.67			
8 (Seventh)	N701 - N715	Fifteen Rooms	375.08	Completed	Completed	Completed
		One Room	6.91			
		One Room	24.67			

BUILDING - V – Hostel 'C' – MITHILA - GROUND + 7 FLOORS (Girls Hostel)

Sl. No./Floor No.	Room No.	Room Type (mention Classroom / Laboratory / Toilet, etc.)	Carpet Area (in m ²)	Completion of Flooring	Completion of Walls and painting	Completion of Electrification and lighting
1 (Ground)	M-001	Office all Inclusive	66.10	Completed	Completed	Completed
	M-002	First Aid cum Sick Room	41.80			
	M003, M005 & M007	Three Guest Rooms	93.35			
	M023	Sports Club	100.69			
	M004, M006, M008 - M016, M017A, M017B, M019 - M020, M021A, M021B, M022	Eighteen Rooms	630.00			
	M018	Single Room	12.64			
	-	Electric Room	13.77			





7 DIMENSION DESIGN
SERVICES LLP

www.7dimensiondesign.com

Sl. No./Floor No.	Room No.	Room Type (mention Classroom / Laboratory / Toilet, etc.)	Carpet Area (in m ²)	Completion of Flooring	Completion of Walls and painting	Completion of Electrification and lighting
2 (First)	M101 - M118, M119A, M119B, M121A, M121B, M122, M123A, M123B, M124, M125A, M125B, M126, M127, M128	Thirty One Rooms	1022.80	Completed	Completed	Completed
	M120	Single Room	12.64			
	-	Electric Room	13.77			
3 (Second)	M201 - M218, M219A, M219B, M221A, M221B, M222, M223A, M223B, M224, M225A, M225B, M226, M227, M228	Thirty One Rooms	1022.80	Completed	Completed	Completed
	-	Utility Room	6.62			
	M220	Single Room	12.64			
	-	Electric Room	13.77			
4 (Third)	M301 - M318, M319A, M319B, M321A, M321B, M322, M323A, M323B, M324, M325A, M325B, M326, M327, M328	Thirty One Rooms	1022.80	Completed	Completed	Completed
	-	Utility Room	6.62			
	M320	Single Room	12.64			
	-	Electric Room	13.77			





7 DIMENSION DESIGN
SERVICES LLP

www.7dimensiondesign.com

Sl. No./Floor No.	Room No.	Room Type (mention Classroom / Laboratory / Toilet, etc.)	Carpet Area (in m ²)	Completion of Flooring	Completion of Walls and painting	Completion of Electrification and lighting
5 (Fourth)	M401 - M402, M403A, M403B, M404A, M404B, M405, M406, M407A, M407B, M408, M409, M410A, M410B, M411 - M413, M414A, M414B, M416, M417A, M417B, M418, M419A, M419B, M420, M421A, M421B, M422 - M423	Thirty Rooms	957.40	Completed	Completed	Completed
	-	Utility Room	6.62			
	M415	Single Room	12.64			
	-	Electric Room	13.77			
6 (Fifth)	M501A, M501B, M502A, M502B, M503, M504, M505A, M505B, M506, M507, M508A, M508B, M509, M510, M511, M512A, M512B, M514, M515A, M515B, M516, M517A, M517B, M518, M519A, M519B, M520, M521	Twenty Eight Rooms	916.40	Completed	Completed	Completed
	-	Utility Room	6.62			
	M513	Single Room	12.64			
	-	Electric Room	13.77			





7 DIMENSION DESIGN
SERVICES LLP

www.7dimensiondesign.com

Sl. No./Floor No.	Room No.	Room Type (mention Classroom / Laboratory / Toilet, etc.)	Carpet Area (in m ²)	Completion of Flooring	Completion of Walls and painting	Completion of Electrification and lighting
7 (Sixth)	M601, M602, M603, M604, M605A, M605B, M606, M607, M608A, M608B, M609, M610, M611, M612A, M612B, M614, M615A, M615B, M616, M617A, M617B, M618, M619A, M619B, M620, M621	Twenty Six Rooms	851.00	Completed	Completed	Completed
	-	Utility Room	6.62			
	M613	Single Room	12.64			
	-	Electric Room	13.77			
8 (Seventh)	M701, M702, M703A, M703B, M704, M705, M706A, M706B, M707, M708, M709, M710A, M710B, M712, M713A, M713B, M714, M715A, M715B, M716, M717A, M717B, M718, M719	Twenty Four Rooms	785.60	Completed	Completed	Completed
	-	Utility Room	6.62			
	M711	Single Room	12.64			
	-	Electric Room	13.77			



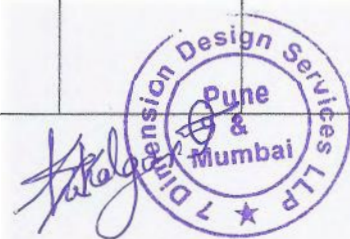


7 DIMENSION DESIGN SERVICES LLP

www.7dimensiondesign.com

BUILDING - VI - Hostel 'D' - VIKRAMSHILA - BASEMENT + GROUND + 8 FLOORS (Additional Residences)

Sl. No. / Floor No.	Room No.	Room Type (mention Classroom / Laboratory / Toilet, etc.)	Carpet Area (in m ²)	Completion of Flooring	Completion of Walls and painting	Completion of Electrification and lighting
1 (Basement)	V023	Store Room	7.75	Completed	Completed	Completed
	-	Electric Room	35.04			
2 (Ground)	V001 - V022	Twenty Two Rooms	837.05	Completed	Completed	Completed
	-	Electric Room	7.75			
3 (First)	V101 - V123	Twenty Three Rooms	876.26	Completed	Completed	Completed
	-	Electric Room	7.75			
4 (Second)	V201 - V223	Twenty Three Rooms	876.26	Completed	Completed	Completed
	-	Electric Room	7.75			
5 (Third)	V301 - V323	Twenty Three Rooms	869.14	Completed	Completed	Completed
	-	Electric Room	7.75			
	-	Server Room	7.12			
6 (Fourth)	V401 - V423	Twenty Three Rooms	869.14	Completed	Completed	Completed
	-	Electric Room	7.75			
	-	Server Room	7.12			
7 (Fifth)	V501 - V523	Twenty Three Rooms	876.26	Completed	Completed	Completed
	-	Electric Room	7.75			
8 (Sixth)	V601 - V623	Twenty Three Rooms	876.26	Completed	Completed	Completed
	-	Electric Room	7.75			





7 DIMENSION DESIGN
SERVICES LLP

www.7dimensiondesign.com

Sl. No./Floor No.	Room No.	Room Type (mention Classroom / Laboratory / Toilet, etc.)	Carpet Area (in m ²)	Completion of Flooring	Completion of Walls and painting	Completion of Electrification and lighting
9 (Seventh)	V701 - V723	Twenty Three Rooms	869.14	Completed	Completed	Completed
	-	Electric Room	7.75			
	-	Server Room	7.12			
10 (Eight)	V801 - V820	Twenty Rooms	876.26	Completed	Completed	Completed
	-	Electric Room	7.75			

Details of the Occupancy / Completion Certificate / Building License / Form D

Certificate approved by	Executive Engineer, MIDC, IT Division, Chinchwad, Pune / Executive Engineer & Special Planning Authority, Wakdewadi, Pune
Approval Number	No/EE/Plans/939/of 2003, No/EE/IT/TB/1972/of 04 & No.EE/IT/TB/A-82270/of 2016
Date of Approval	27.05.2003, 03.11.2004 & 15.03.2016

Structural Stability Certificate

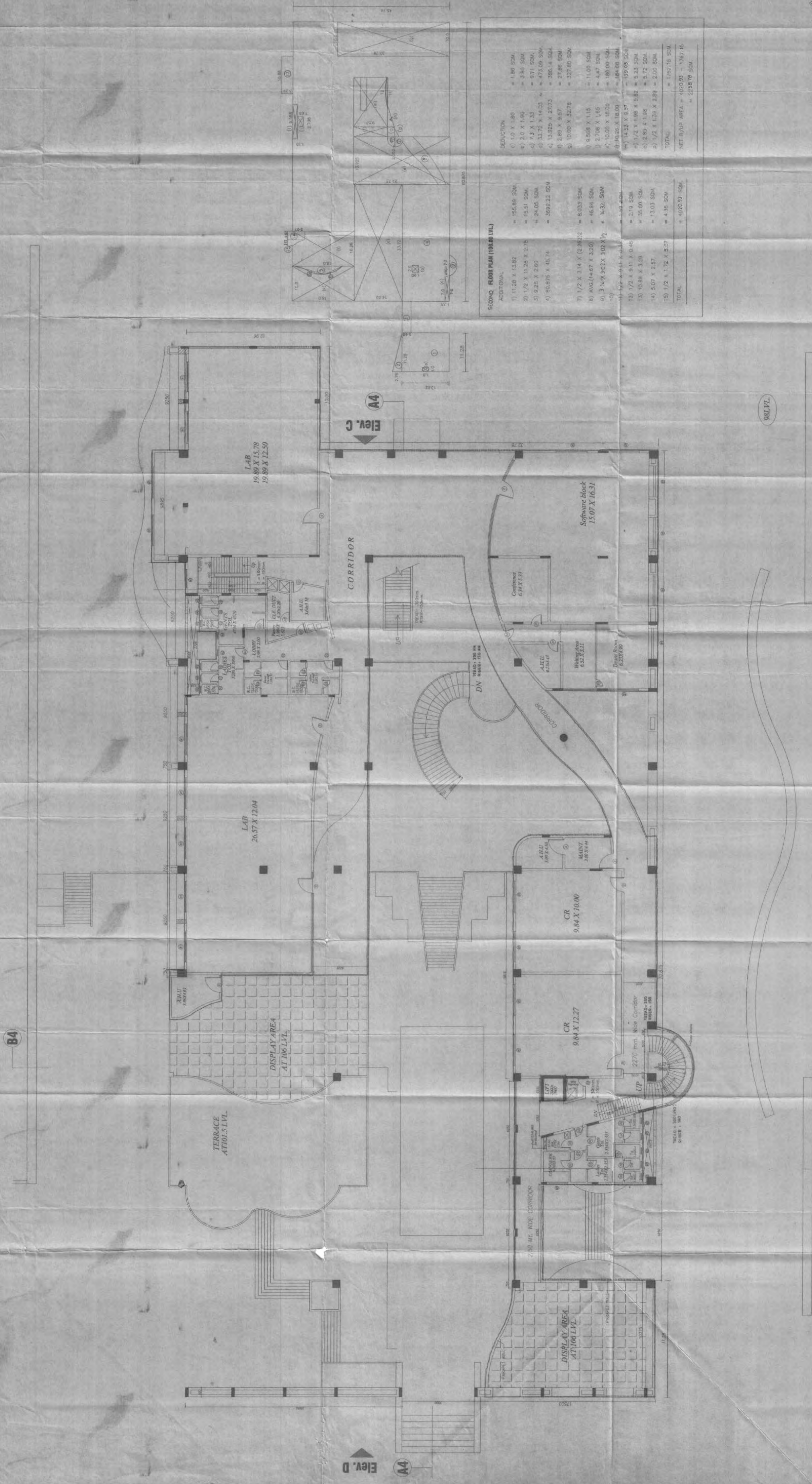
Certificate approved by	Structural Engineer (Mr. Suhas Joshi)
Approval Number	Registration No. 38 A.M.I.E. No. - 061220
Date of Approval	03.02.2017

I hereby certify that:

1. The Competent Authority has approved the Building Completion Certificate (BCC) / Occupancy Certificate (OC) / Structural Stability Certificate mentioned above is available, verified and authentic
2. I have verified the above mentioned Certificates from the Office of the Competent Authorities i.e. MIDC, Pune and the Structural Engineer respectively
3. The above mentioned Certificates have been approved by the Competent Authorities
4. The above mentioned certificates are authentic
5. The Institute has made certain provisions by way of internal partitions (as required) without any structural changes to the originally approved building plans by the Executive Engineer, MIDC, IT Division, Chinchwad, Pune to meet the norms and requirements stipulated by the All India Council for Technical Education (AICTE), New Delhi

Signature of Architect		Seal	
Name of the Architect		Ar. Abdulqadar Altaf Hussain Shikalgar	
Registration No.		CA / 2012 / 54426 (Valid upto 31.12.2023)	
Date	January 30, 2018	Place	Pune





All India Council for Technical Education

(A Statutory body under Ministry of HRD, Govt. of India)

Nelson Mandela Marg, Vasant Kunj, New Delhi-110070 Website: www.aicte-india.org



APPROVAL PROCESS 2018-19

Extension of Approval (EoA)

F.No. Western/1-3516262017/2018/EOA

Date: 10-Apr-2018

To,

The Secretary,
Tech. & Higher Education Deptt.
Govt. of Maharashtra, Mantralaya,
Annexe Building, Mumbai-400032

Sub: Extension of Approval for the Academic Year 2018-19

Ref: Application of the Institution for Extension of approval for the Academic Year 2018-19

Sir/Madam,

In terms of the provisions under the All India Council for Technical Education (Grant of Approvals for Technical Institutions) Regulations 2016 notified by the Council vide notification number F.No.AB/AICTE/REG/2016 dated 30/11/2016 and amended on December 5, 2017 and norms standards, procedures and conditions prescribed by the Council from time to time, I am directed to convey the approval to

Permanent Id	1-448945341	Application Id	1-3516262017
Name of the Institute	INTERNATIONAL INSTITUTE OF INFORMATION TECHNOLOGY (I ² IT)	Name of the Society/Trust	HOPE FOUNDATION AND RESEARCH CENTRE (HOPE FOUNDATION)
Institute Address	P-14, RAJIV GANDHI INFOTECH PARK, HINJAWADI, PUNE, PUNE, Maharashtra, 411057	Society/Trust Address	P - 14, RAJIV GANDHI INFOTECH PARK, MIDC - PHASE I, HINJAWADI, PUNE - 411 057, PUNE, PUNE, Maharashtra, 4110 07
Institute Type	Unaided - Private	Region	Western

Opted for change from Women to Co-Ed and Vice versa	No	Opted for Change of Site	No
Change from Women to Co-Ed and vice versa Approved or Not	NA	Change of Site Approved or Not	NA
New Name After change from Women to Co-Ed and Vice versa	NA	New Site Address after change of Site Approved	NA
Opted for Change of Name	No	Opted for Conversion from Degree to Diploma	No
Change of Name Approved or Not	NA	Opted for Conversion from Diploma to Degree	No
New Name After Institute Name Change Approved	NA	Conversion (Degree to Diploma or vice-a- versa) Approved or Not	NA
Opted for Organization Name Change	Yes	Change of Organization Name Approved or Not	Yes

Old Organization Name	INTERNATIONAL INSTITUTE OF INFORMATION TECHNOLOGY (I ² IT)
------------------------------	---

To conduct following Courses with the Intake indicated below for the Academic Year 2018-19

Program	Shift	Level	Course	FT/PT+	Affiliating Body (Univ/Body)	Intake Approved for 2018-19	NRI Approval Status	PIO / FN / Gulf quota/ OCI/ Approval Status	Foreign Collaboration /Twining Program Approval Status*
ENGINEERING AND TECHNOLOGY	1st	UNDER GRADUATE	ELECTRONICS & TELE-COMMUNICATION ENGINEERING	FT	University of Pune, Pune	60	NA	NA	NA
ENGINEERING AND TECHNOLOGY	1st	UNDER GRADUATE	COMPUTER ENGINEERING	FT	University of Pune, Pune	60	NA	NA	NA
ENGINEERING AND TECHNOLOGY	1st	UNDER GRADUATE	INFORMATION TECHNOLOGY	FT	University of Pune, Pune	60	NA	NA	NA

+FT –Full Time,PT-Part Time

In case of any differences in content in this Computer generated Extension of Approval Letter, the content/information as approved by the Executive Council / General Council as available on the record of AICTE shall be final and binding.

Strict compliance of Anti-Ragging Regulation: - Approval is subject to strict compliance of provisions made in AICTE Regulation notified vide F. No. 37-3/Legal/AICTE/2009 dated July 1, 2009 for Prevention and Prohibition of Ragging in Technical Institutions. In case Institution fails to take adequate steps to Prevent Ragging or fails to act in accordance with AICTE Regulation or fails to punish perpetrators or incidents of Ragging, it will be liable to take any action as defined under clause 9(4) of the said Regulation.

Prof. A.P Mittal
Member Secretary, AICTE

Copy to:

1. The Regional Officer,
All India Council for Technical Education
Industrial Assurance Building
2nd Floor, Nariman Road
Mumbai - 400 020, Maharashtra
2. The Director Of Technical Education**,
Maharashtra
3. The Registrar**,
University of Pune, Pune
4. The Principal / Director,
INTERNATIONAL INSTITUTE OF INFORMATION TECHNOLOGY (I²IT)
P-14, RAJIV GANDHI INFOTECH PARK, HINJAWADI,PUNE,
PUNE,PUNE,
Maharashtra,411057
5. The Secretary / Chairman,
HOPE FOUNDATION AND RESEARCH CENTRE (HOPE FOUNDATION)
P - 14, RAJIV GANDHI INFOTECH PARK, MIDC - PHASE I, HINJAWADI, PUNE - 411 057,
PUNE,PUNE,
Maharashtra,411007
6. Guard File(AICTE)

Note: Validity of the Course details may be verified at <http://www.aicte-india.org/>

** Individual Approval letter copy will not be communicated through Post/Email. However, consolidated list of Approved Institutions(bulk) will be shared through official Email Address to the concerned Authorities mentioned above.